

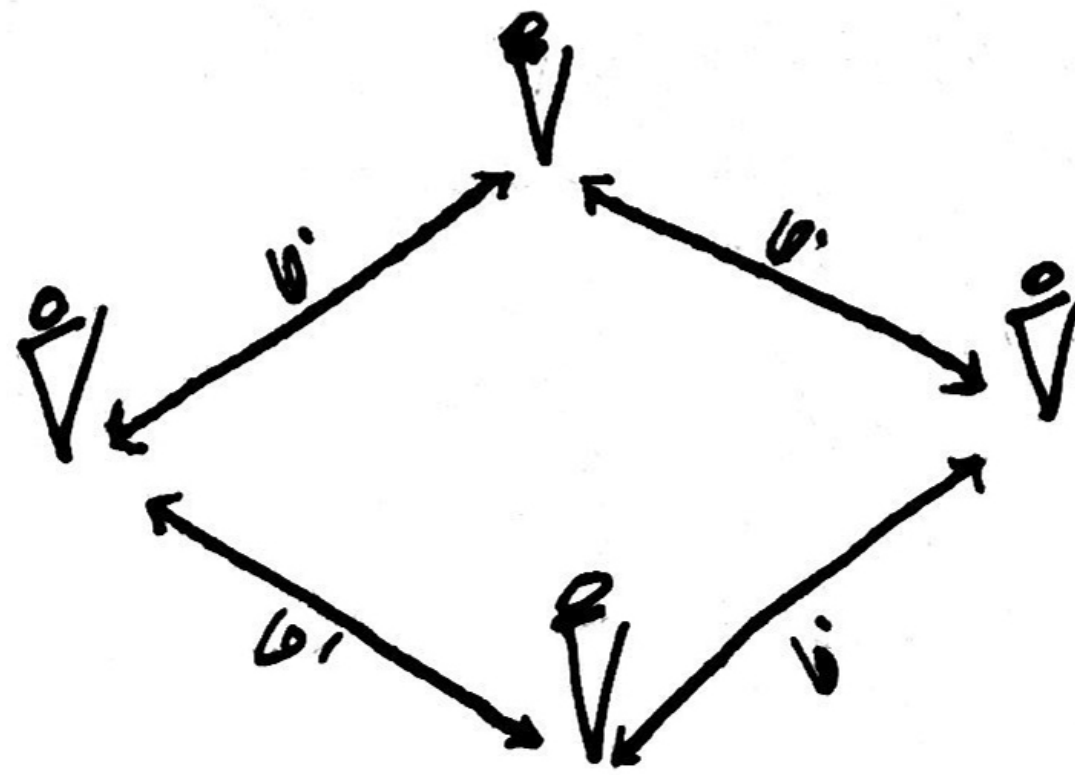




DESIGN CONCEPT

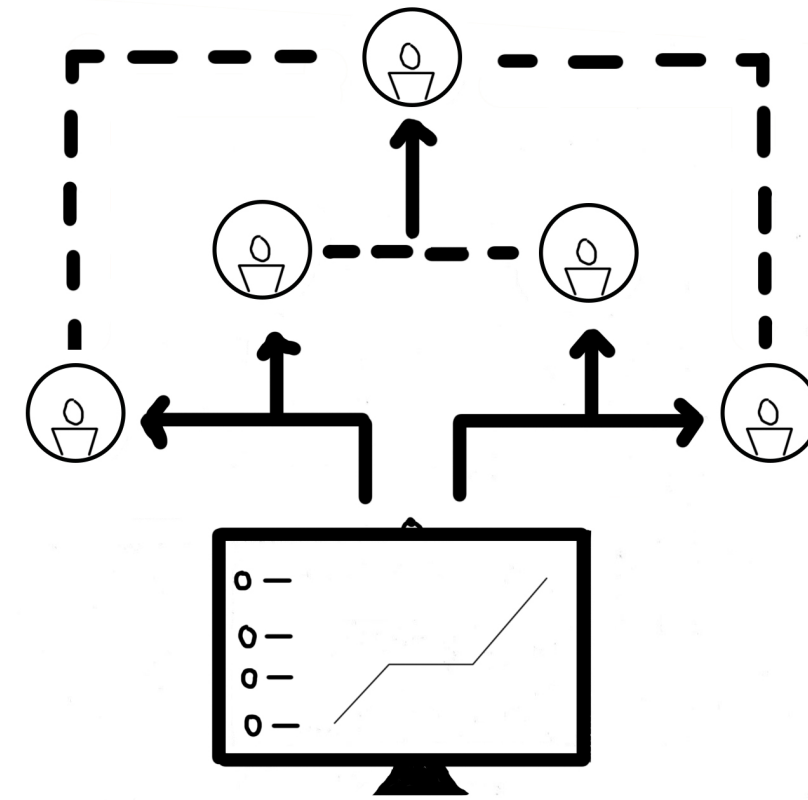
Like Atlanta's botanical gardens, NEXT is an ever-evolving company whose focus is improving the general happiness of people through health and wellness. NEXT Atlanta takes inspiration from this garden by engaging their employees' minds through unique work settings, catalyzing interactions between oneself, others, and the natural environment through social and individual spaces, and focuses people to convert what could be mundane work into the extraordinary through an inspiring work environment (Design). The addition of biophilic design within the spatial layout provides NEXT Atlanta a fluidity of spaces that encourage collaboration amongst employees while appropriating for physical distancing. To reach their full potential, a wide range of work settings are provided to accommodate preferences of their multi-generational workforce.

Fig. 1



Physical distancing

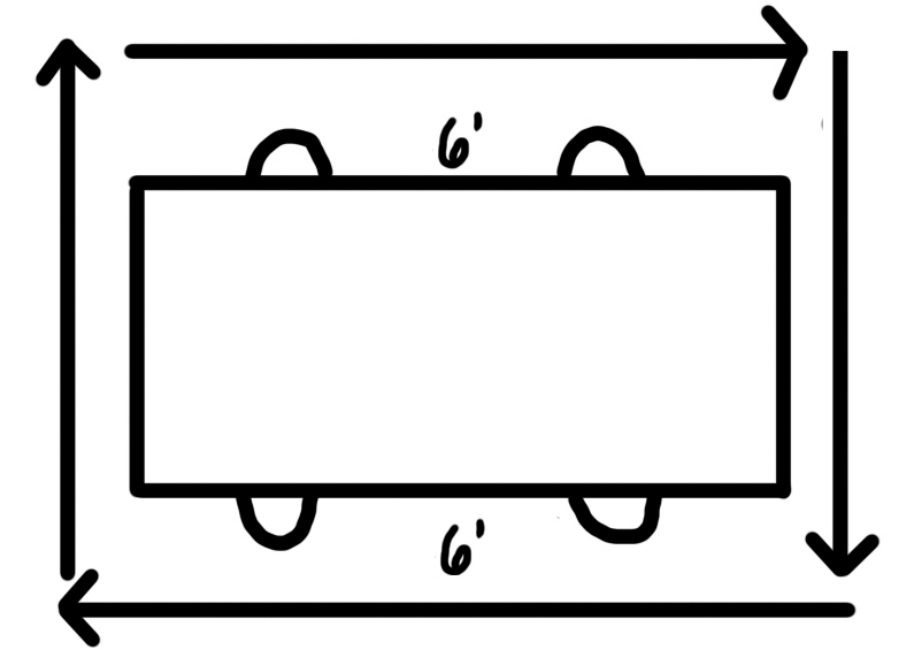
“Personal sphere” accommodation (2020)



Remote Collaboration Tools

Staying connected in office or at home

(CB Insights, 2020)



Spatial Context

Spaces ability to adapt to physical distancing and circulation patterns (2020)

“Study nature, love nature, stay close to nature. It will never fail you”

-Frank Lloyd Wright

(Gray & Birrell, 2014)

Biophilic design is a concept that blends together the relationship between nature and the built environment directly and indirectly

(“HUMAN SPACES:,” 2015).

Inclusion of biophilic design, no matter what the characteristic may be, is proven to have a psychological effect on the users of the space

(“HUMAN SPACES:,” 2015).

DESIGN INSPIRATION | ATLANTA BOTANICAL GARDEN | BIOPHILIC DESIGN



Organic ceiling to push users through the space

Fig. 2



Stark environment with pops of contrasting natural materials

Fig. 3



Variety of ceiling treatments to delineate space

Fig. 4



Organic circulation and biophilic features

Fig. 7



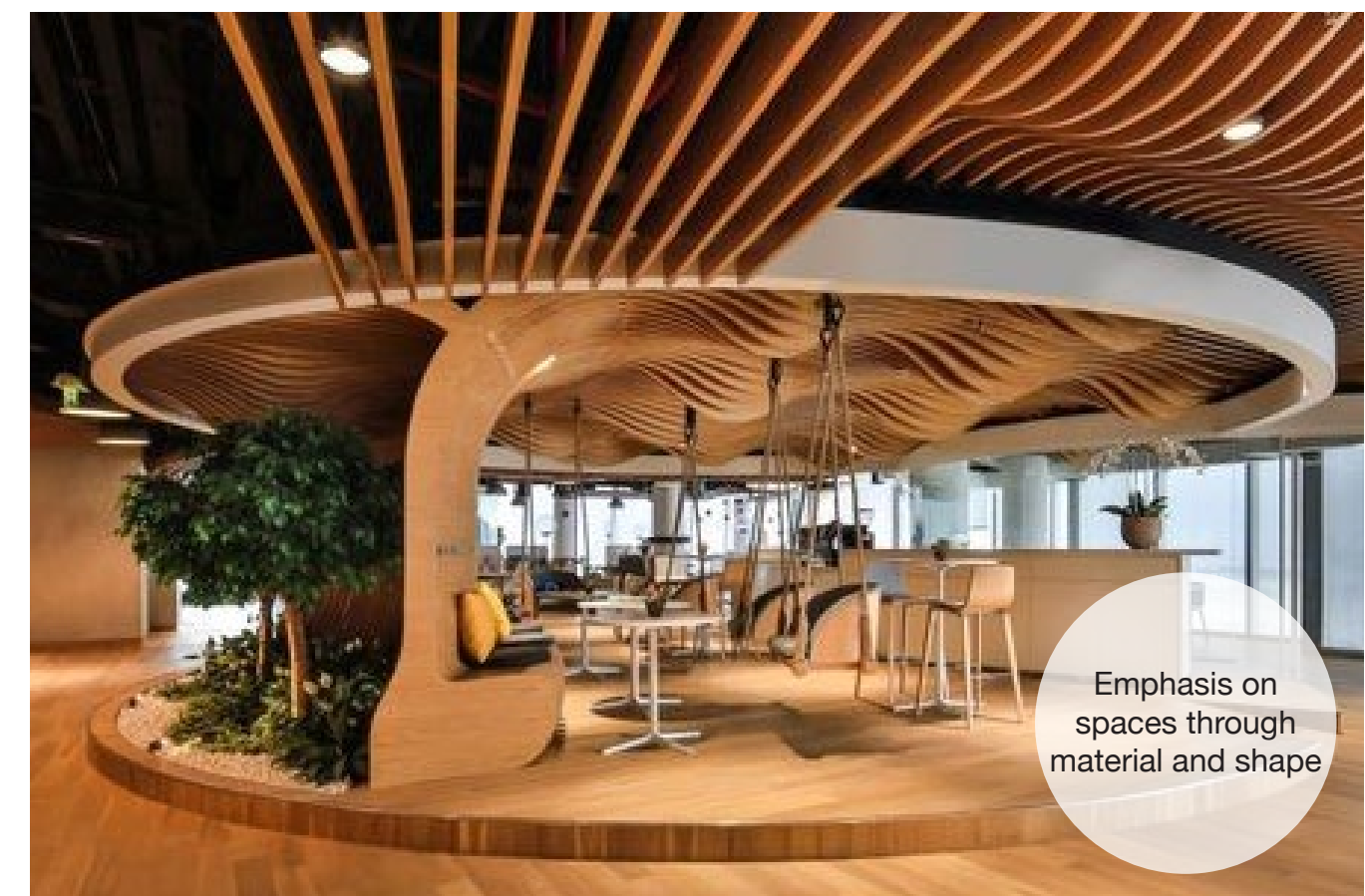
Ceiling focal points to draw emphasis

Fig. 5



Glass walls to increase visibility and sunlight

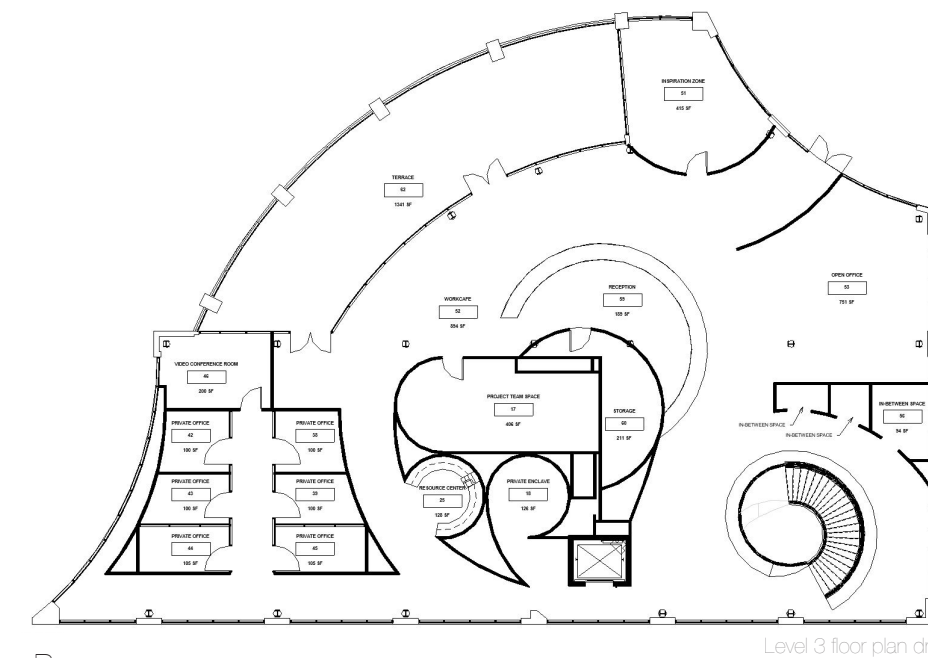
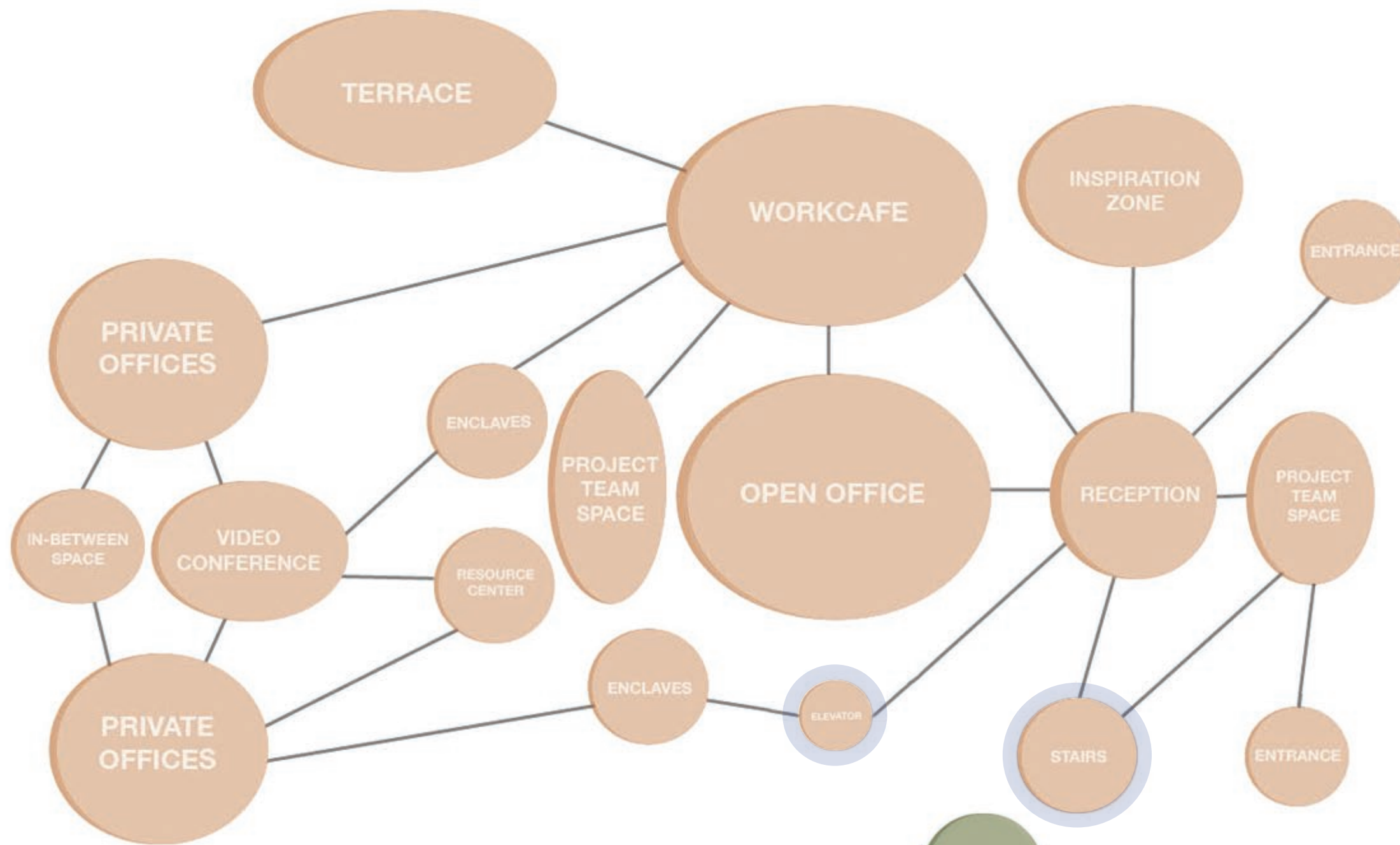
Fig. 6



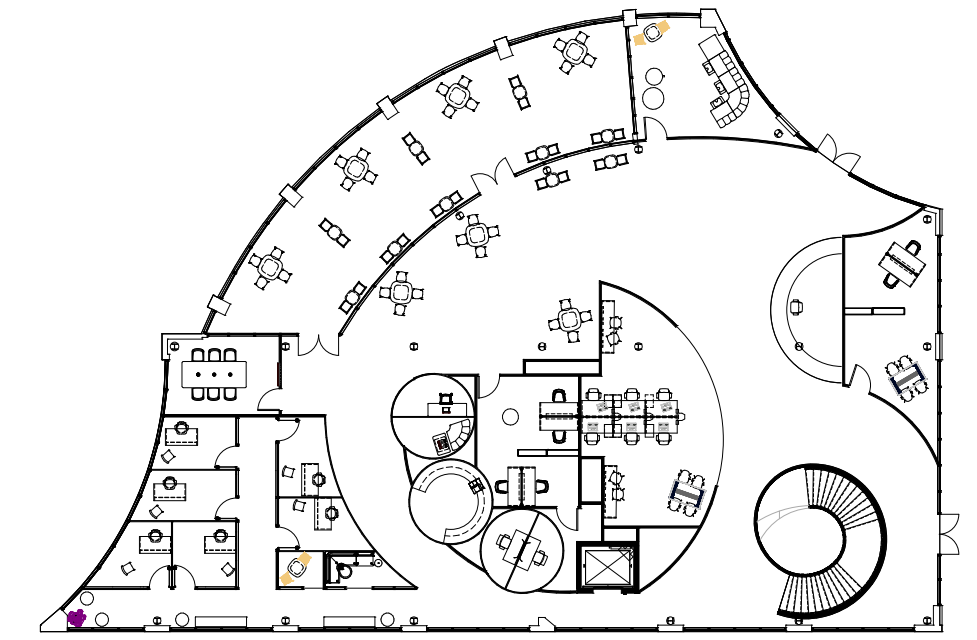
Emphasis on spaces through material and shape

Fig. 8

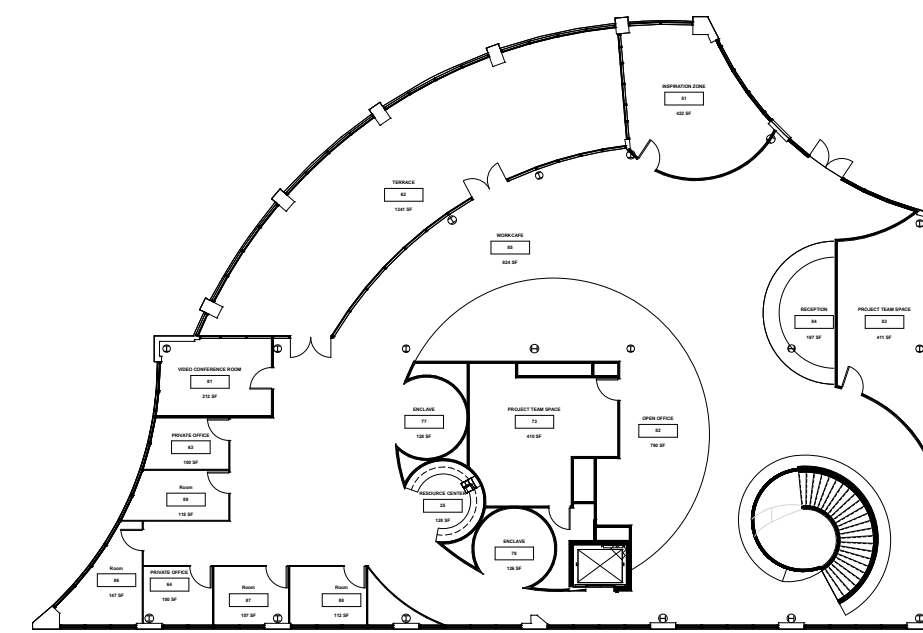
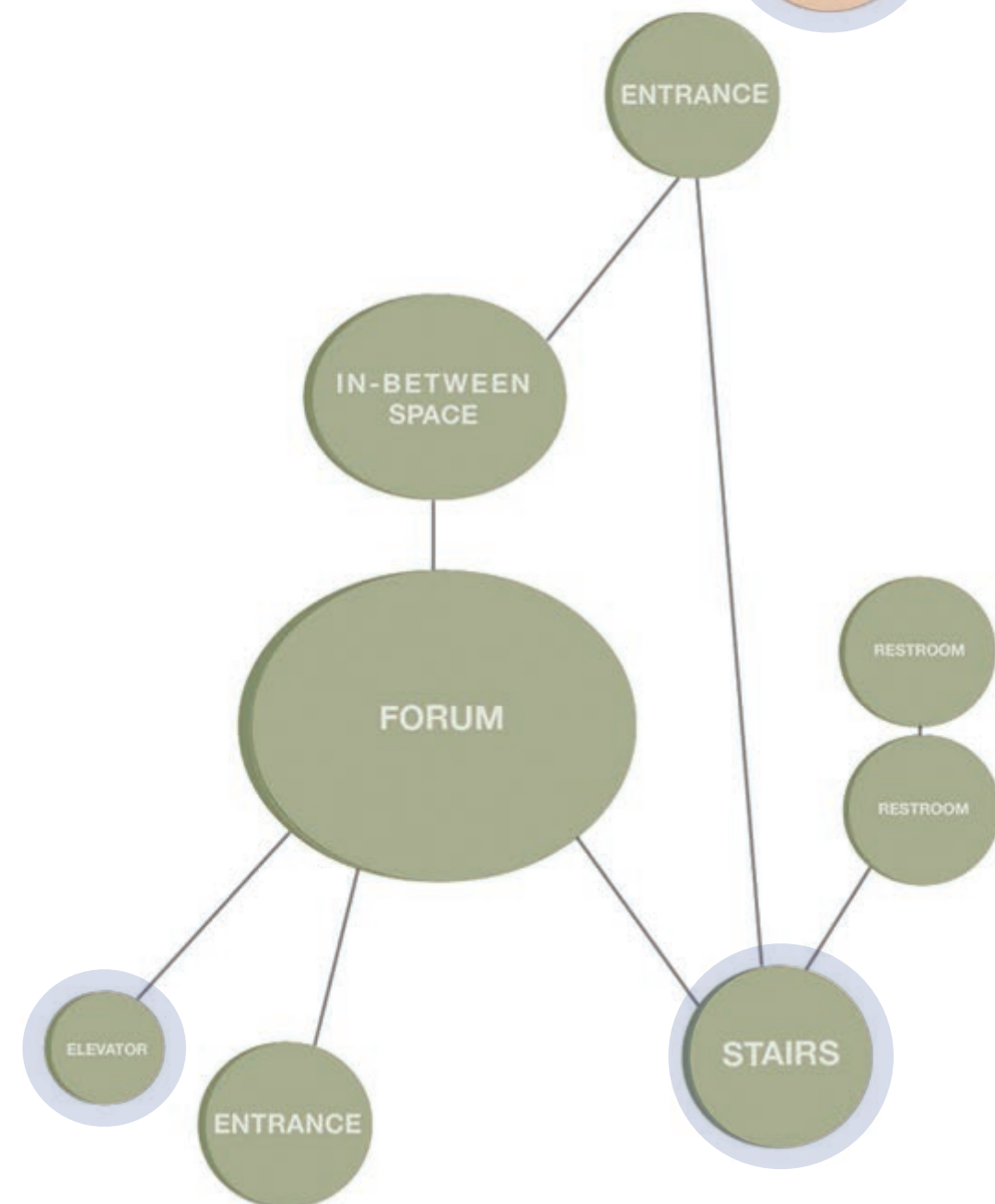
DESIGN PROCESS | BUBBLE DIAGRAMS | LEVEL 3 IDEATION



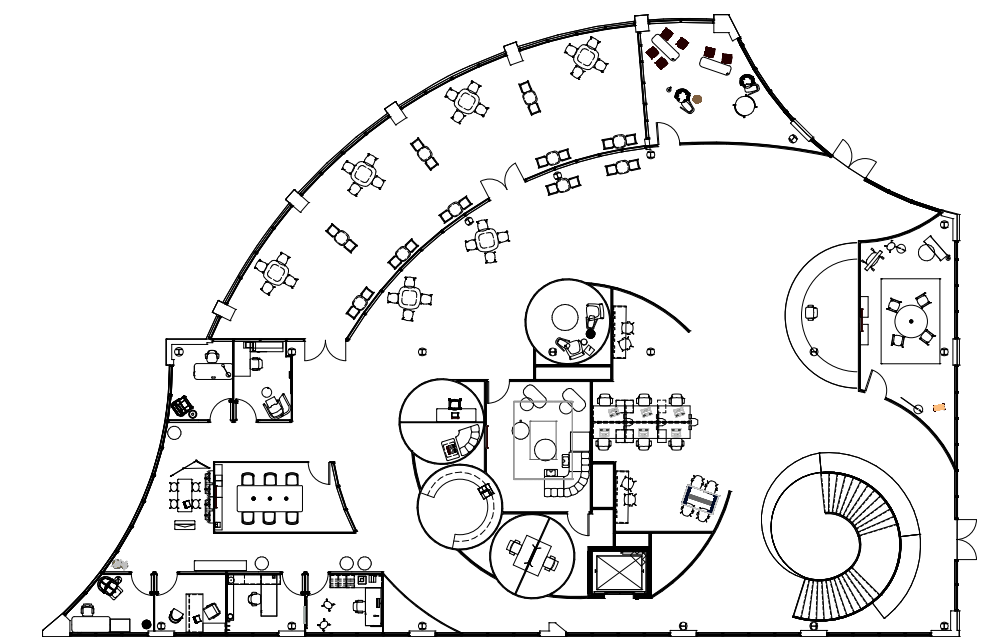
- Pros:
- Consistency in organic layout
- Cons:
- No natural lighting in private offices
 - Forced curves
 - Protruding reception desk



- Pros:
- Radial furniture layout on terrace
- Cons:
- Unbalanced middle section
 - Poor private office circulation
 - Dead end hallway



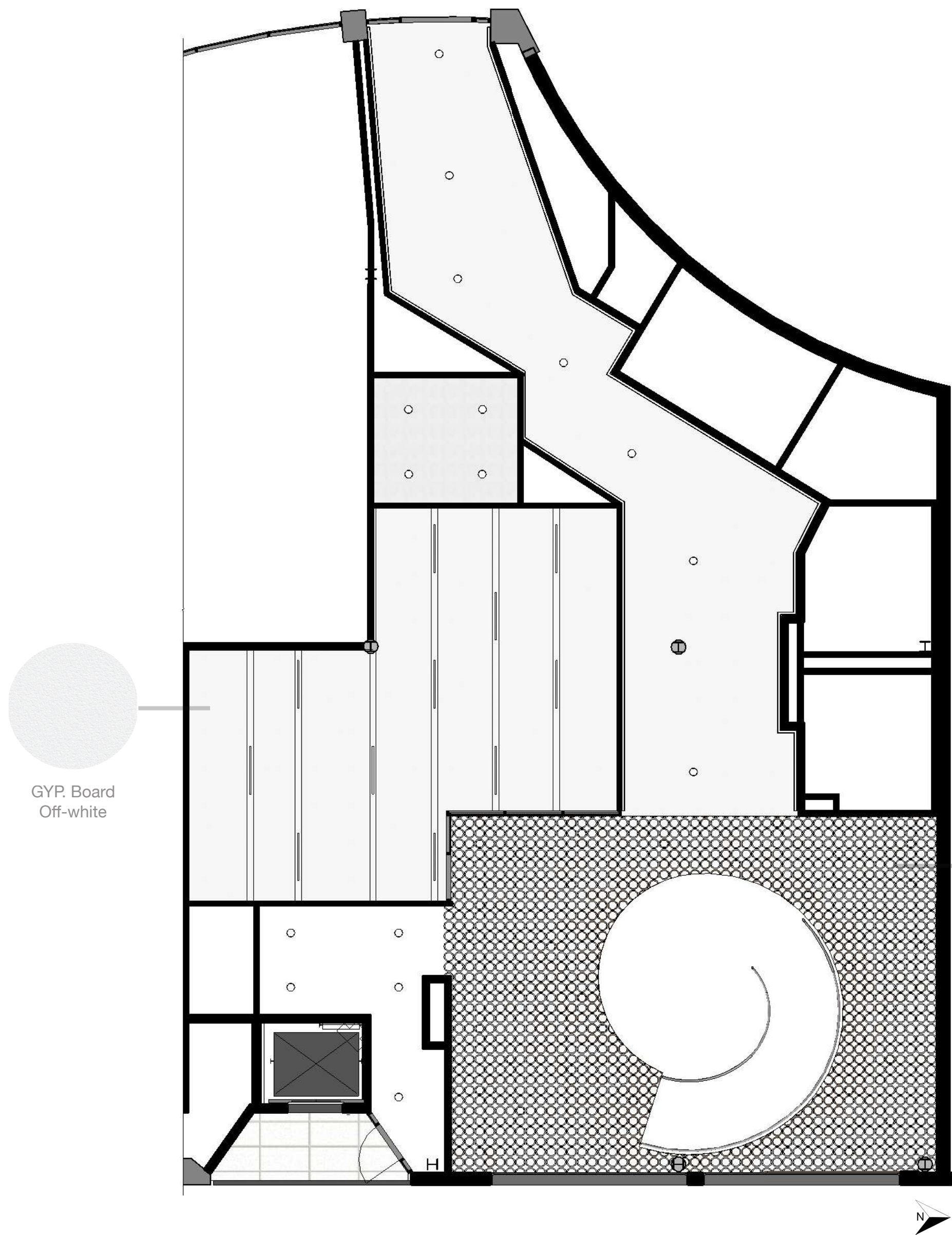
- Pros:
- Implied circulation through curves
- Cons:
- Too much circulation space
 - Awkward private offices
 - Forced curves



- Pros:
- Consistent curves
 - Implied circulation through curves
- Cons:
- Not enough open office space

FLOOR PLAN | LEVEL 1 1/8" = 1'0"

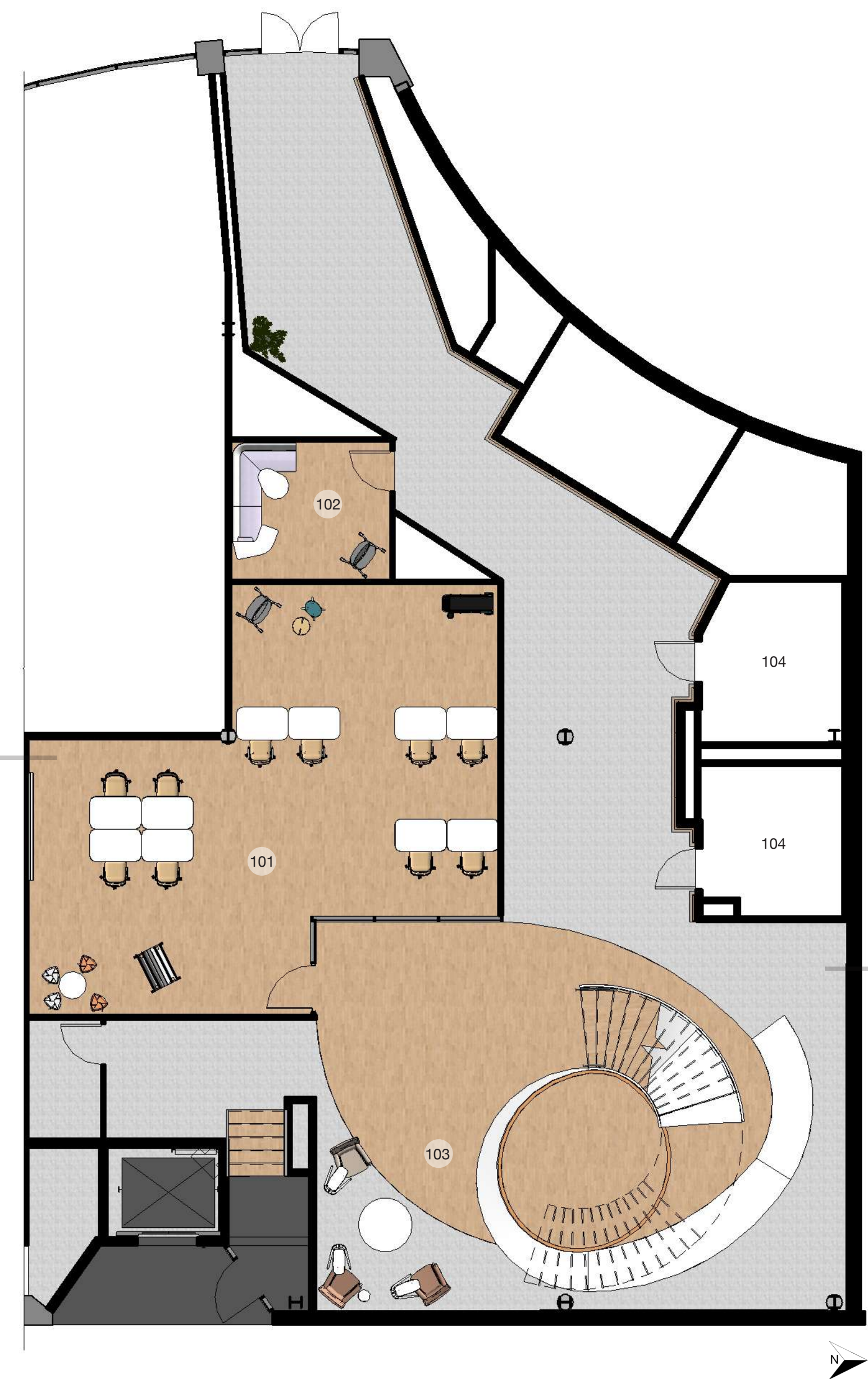
REFLECTED CEILING PLAN | LEVEL 1 1/8" = 1'0"



GYP. Board
Off-white

Wood/painted
wood cladding

Concrete



101 Forum

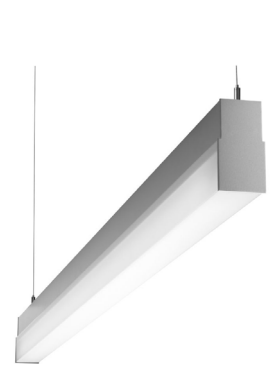
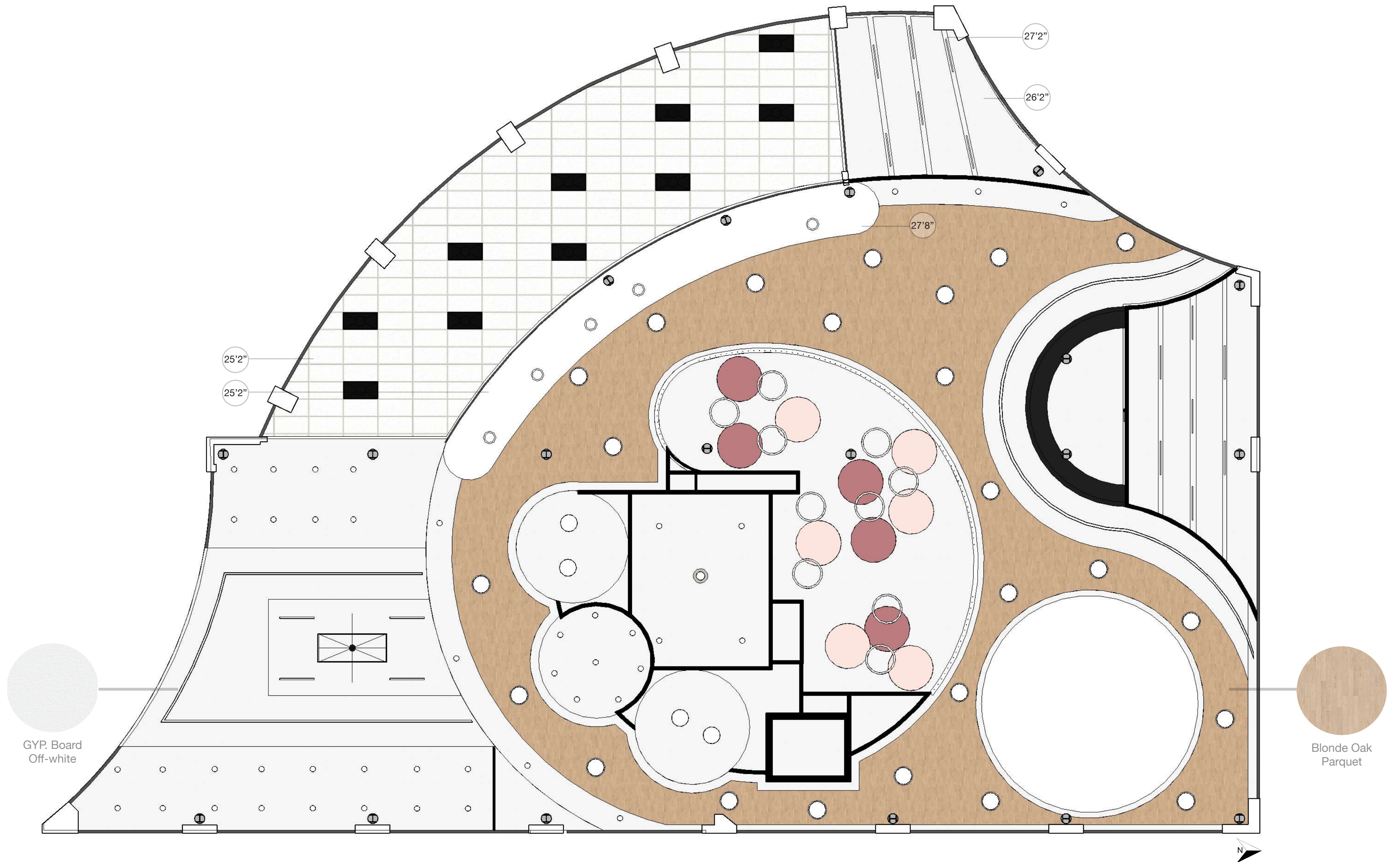
102 In-Between Space

103 Stairs/Gathering space

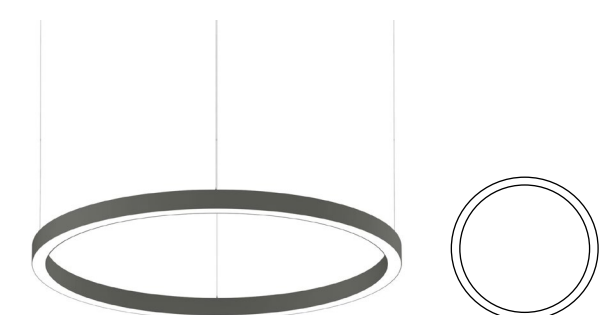
104 Restrooms

Wood/painted
wood cladding

REFLECTED CEILING PLAN | LEVEL 2 1/8" = 1'0"



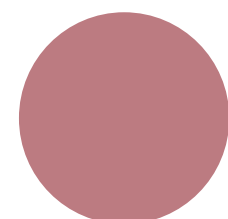
Pendant
Prudential (202)



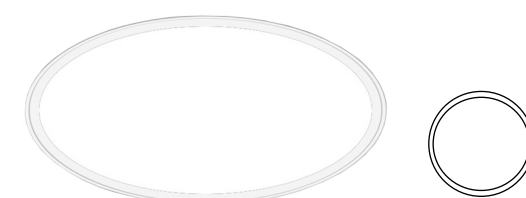
Pendant
Mino (203)



Acoustic Panel
Echophone (203)



Pendant
Zero (204)



Recessed
Pop Round (204)



Recessed
Fluxgrid (204)



FLOOR PLAN | LEVEL 2 1/8" = 1'0"



201 Project Team Space (1)

202 Inspiration Zone

203 Open Office

204 Workcafe

205 Project Team Space (2)

206 Enclaves (1)

207 Resource Center

208 Enclaves (2)

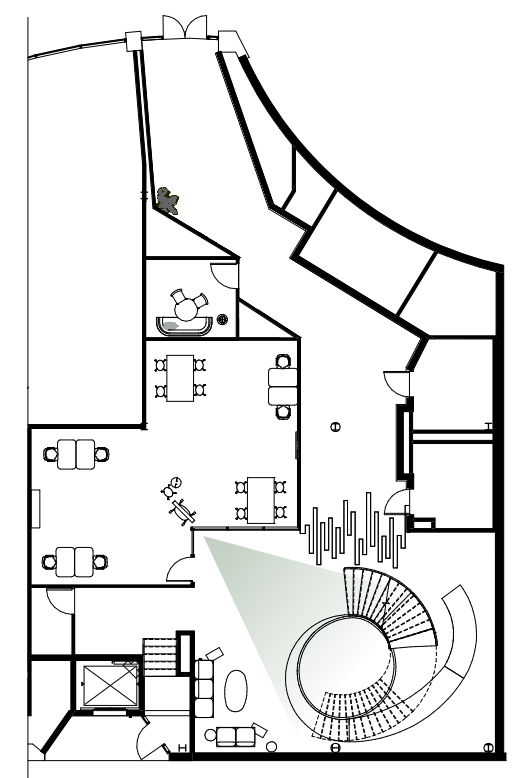
209 Video Conference Room

210-212 Assigned Private Offices

213-215 Unassigned Private Office

216 In-Between Space

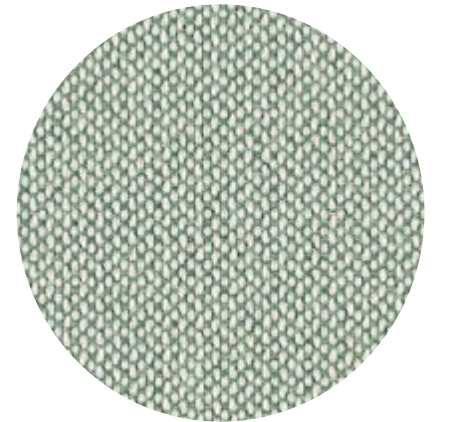
MONUMENTAL STAIRCASE | LEVEL 1



RECEPTION | LEVEL 2



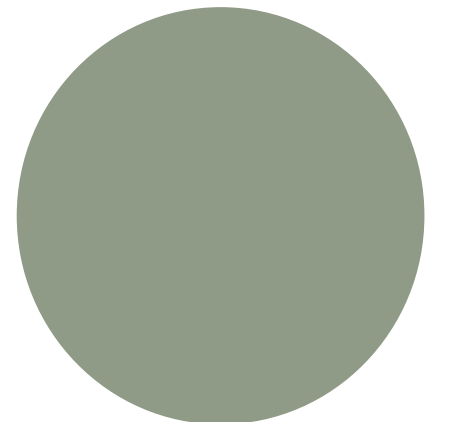
Steelcase | Cobi 434 Series



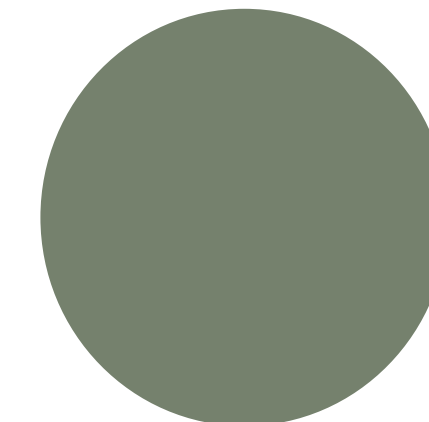
Steelcase | Era Olivine



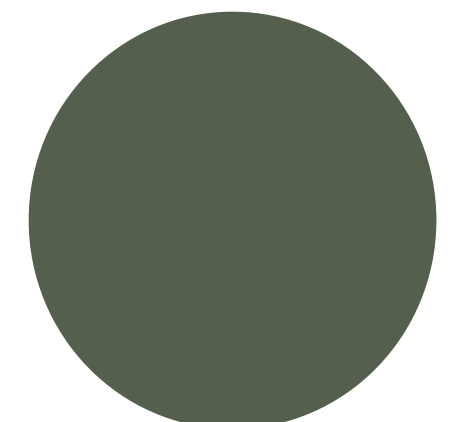
Natural Cork



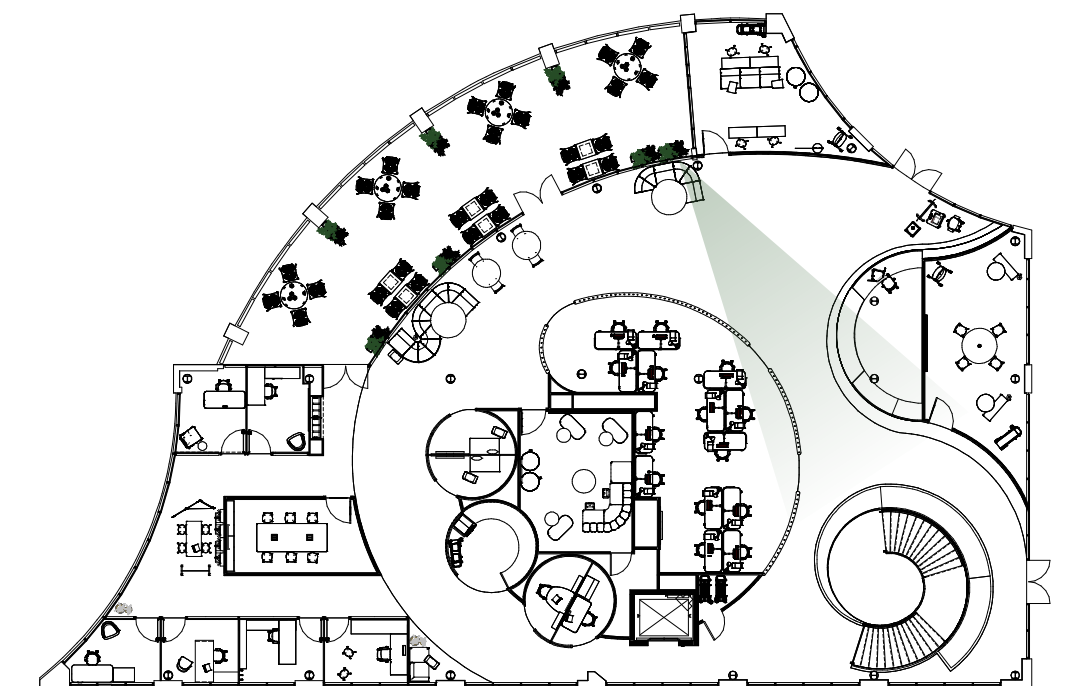
Ben Moore | Lush



Ben Moore | Avon Green



Ben Moore | Terre Verte



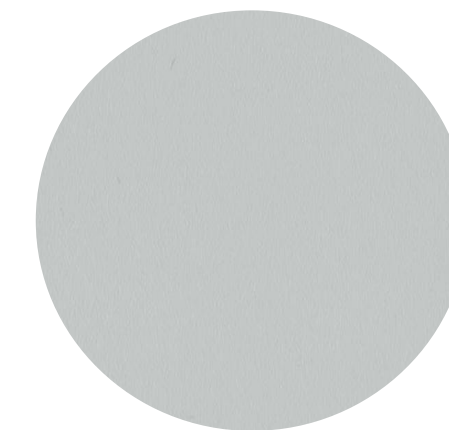
OPEN OFFICE | LEVEL 2



Steelcase | Flex-Height Adjustable Desk



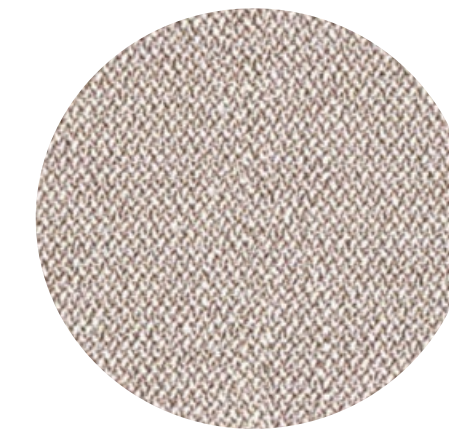
Steelcase | Cobi 434 Series



Steelcase | Seagull



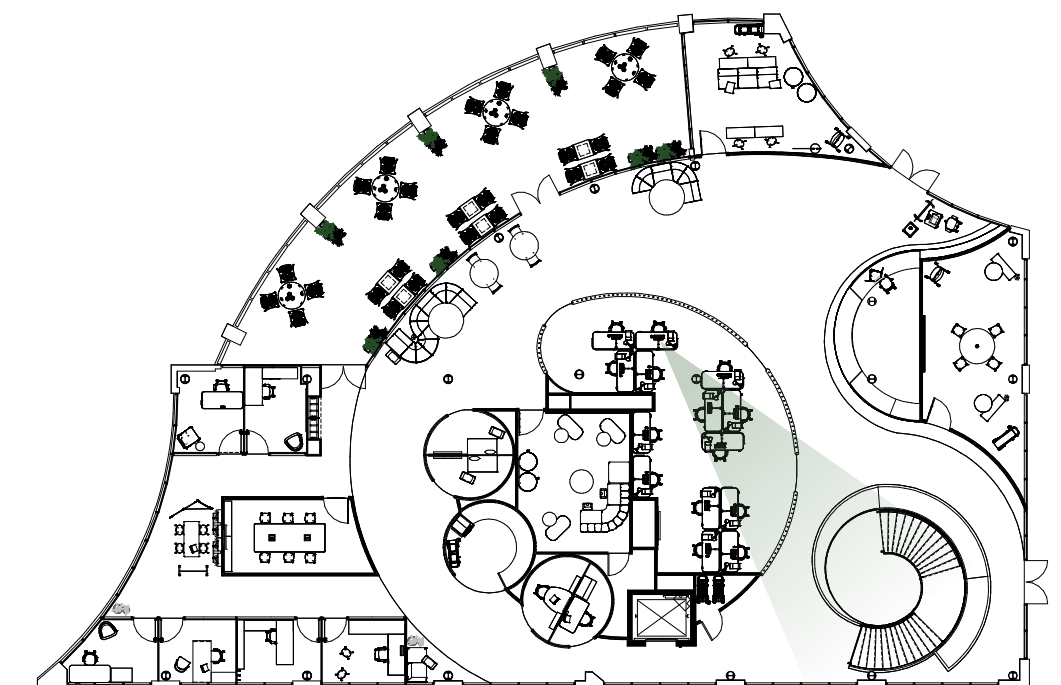
Steelcase | Driftwood Speckle



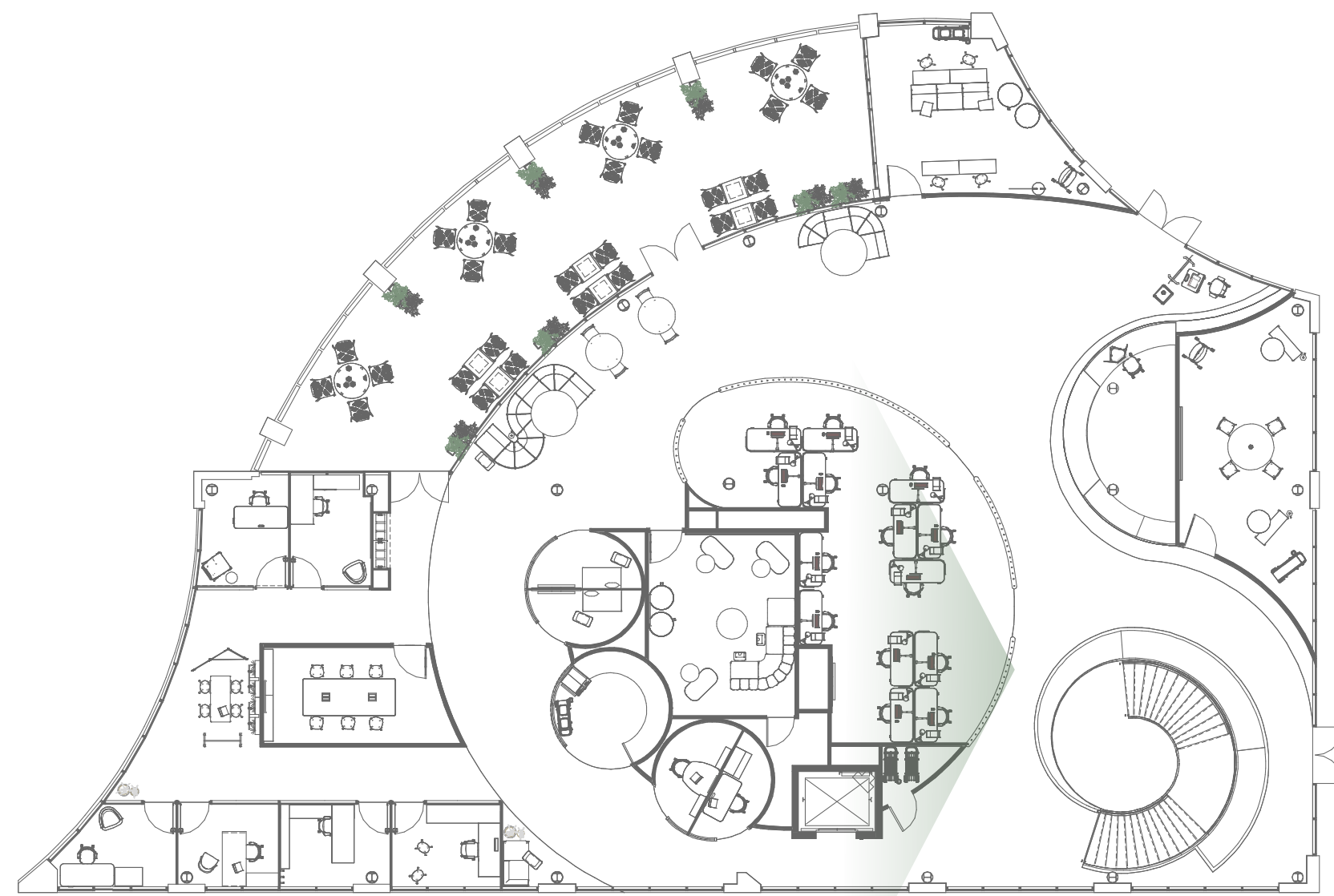
Steelcase | Era Comet



Steelcase | 288 Milk



OPEN OFFICE | ELEVATION



Open office elevation viewpoint



WORKCAFE | LEVEL 2



Steelcase | Turnstone simple chair



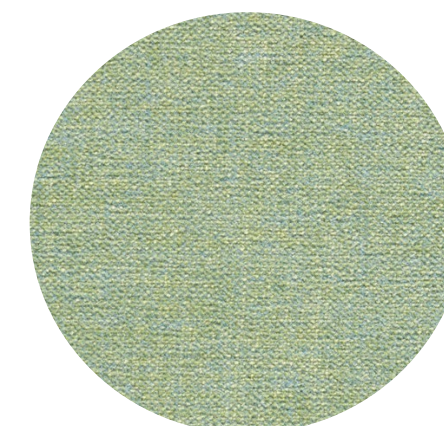
Steelcase | Turnstone Campfire lounge chair



Coalesse | Bob Table



Steelcase | Ash Laminate



Steelcase | Sea green



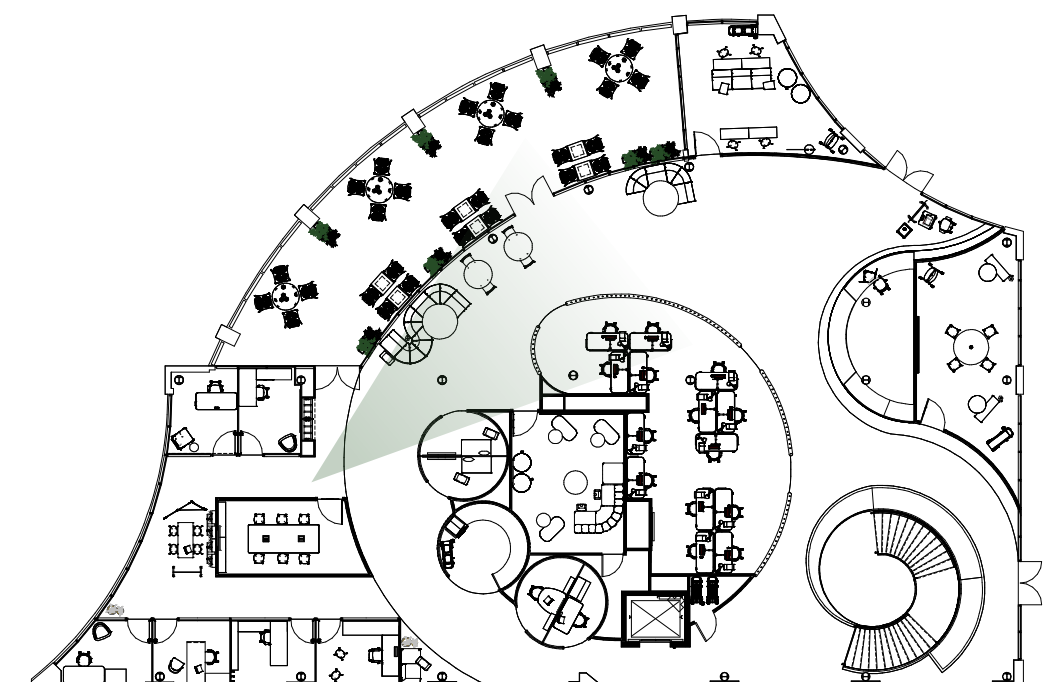
Coalesse | Natural Cork



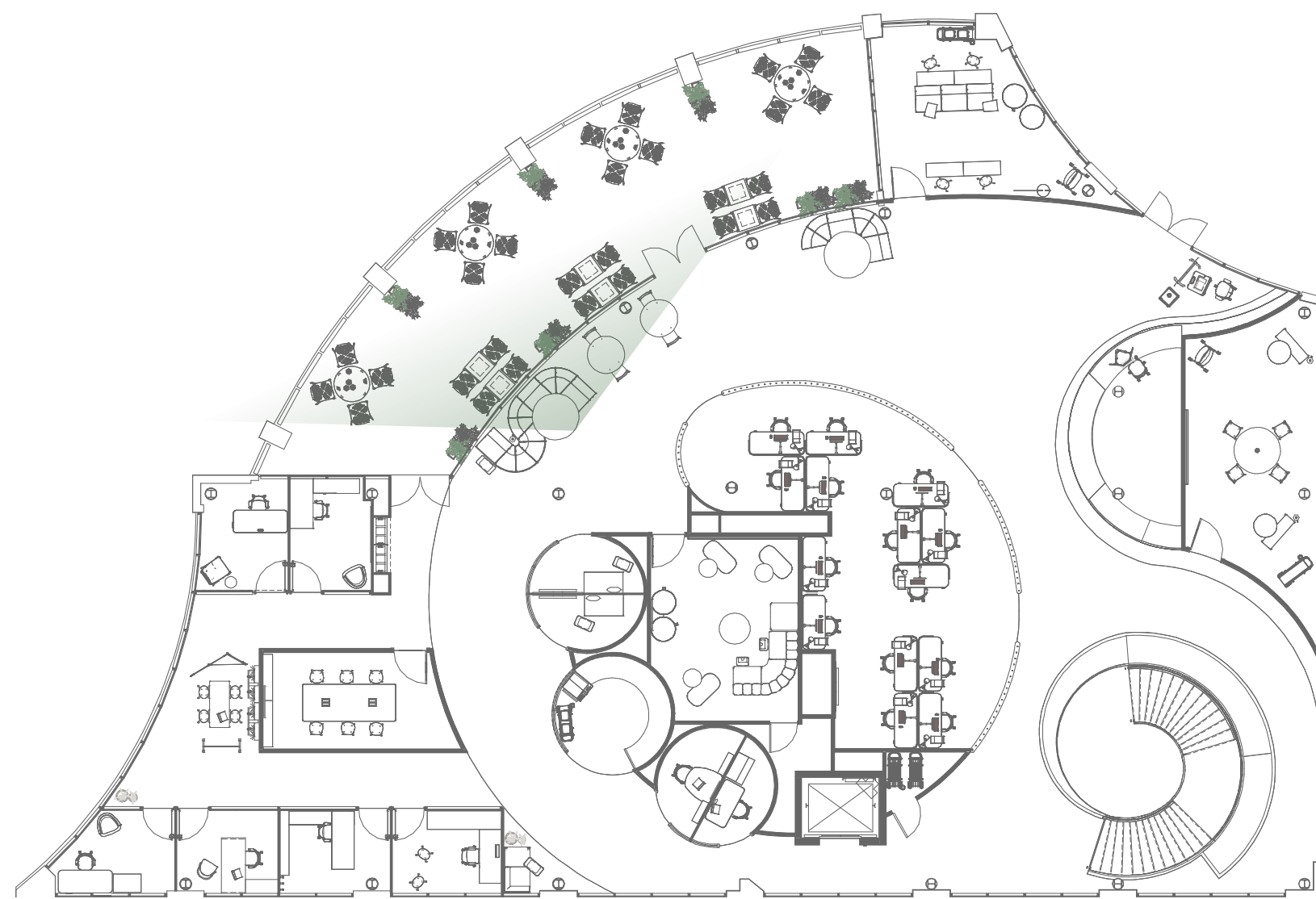
Steelcase | Canvas



Steelcase | Gamut Unfinished



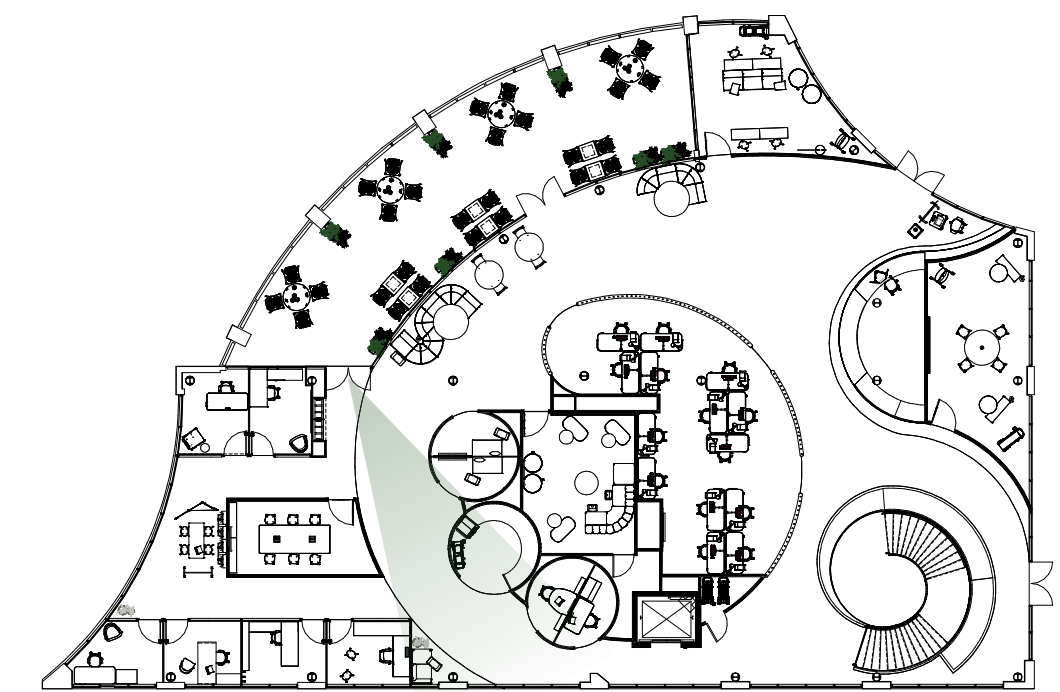
WORKCAFE | ELEVATION



Workcafe elevation viewpoint



ENCLAVES | LEVEL 2



IN-BETWEEN SPACE | LEVEL 2



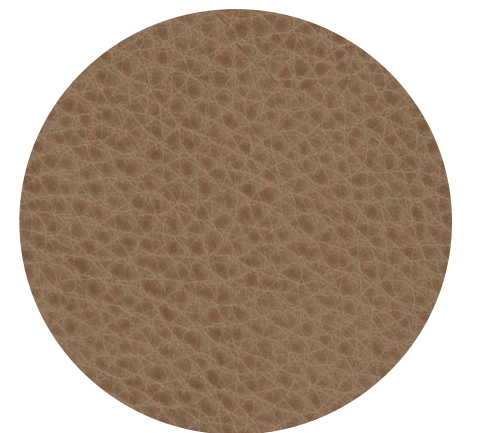
Steelcase | Group work Screen



Coalesse | Enea stool



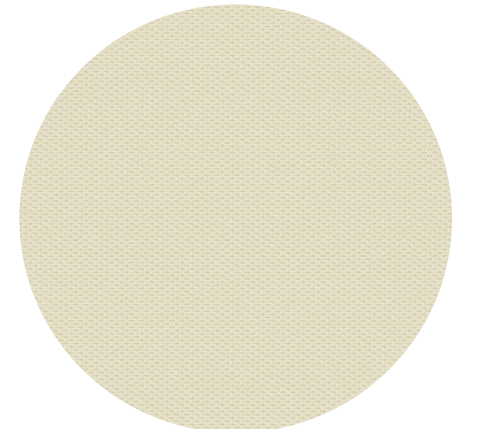
Steelcase | B-Free Standing Height table



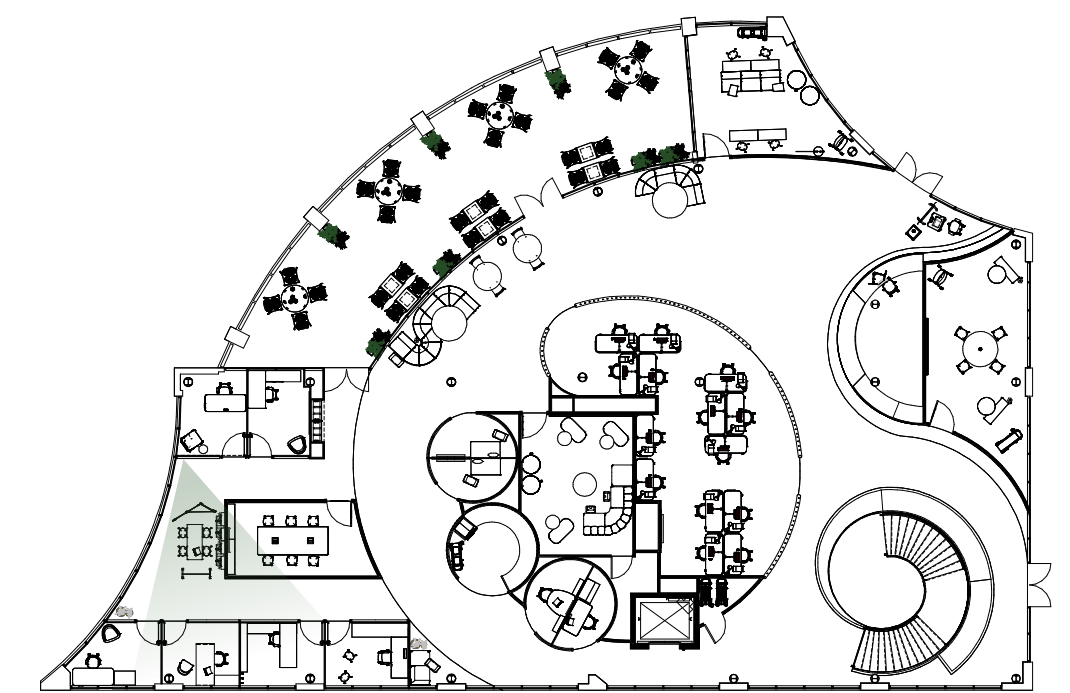
Coalesse | Ovation Leather



Steelcase | Premium White



Steelcase | Coconut 5s15



INSPIRATION ZONE | LEVEL 2



Steelcase | Turnstone Campfire Slim Table



Steelcase | Turnstone Campfire Personal Table



Bolia | Pouf



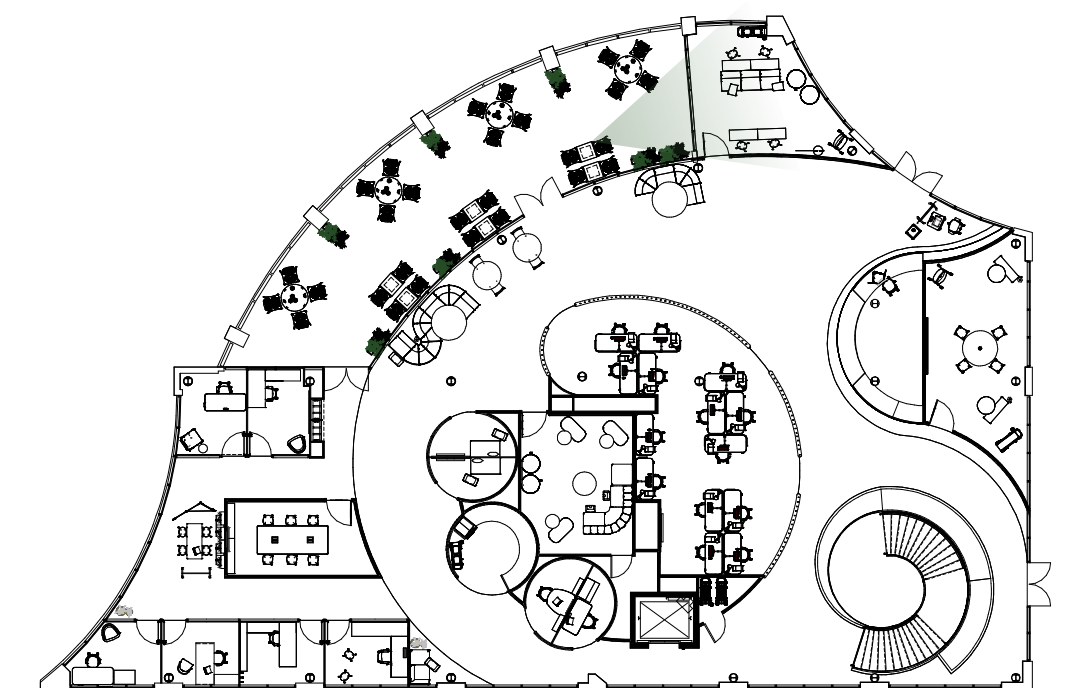
Steelcase | Ash Laminate



Steelcase | 2HAN Ash Noce



Steelcase | Linea Beige



WORKS CITED

CB Insights. (2020, August 31). Reopening: The Tech-Enabled Office In A Post-Covid World. Retrieved September 07, 2020, from <https://www.cbinsights.com/research/report/reopening-office-tech-work-post-covid/>

Design, F. (n.d.). About 3 fromme DESIGN: Tres Fromme: Garden + landscape + display. Retrieved December 07, 2020, from <https://3frommedesign.com/about.html>

Fig. 1 & 7 Atlanta Botanical Garden: Master Plan. (n.d.). Retrieved October 13, 2020, from https://3frommedesign.com/master_atlanta_botanical.html

Fig. 2 Arhitektura kao inspiracija fotografima. (n.d.). Retrieved December 07, 2020, from <https://forum.krstarica.com/threads/arhitektura-kao-inspiracija-fotografima.809683/page-4>

Fig.3 Saieh, N. (2011, September 14). House N / Sou Fujimoto Architects. Retrieved December 07, 2020, from <https://www.archdaily.com/7484/house-n-sou-fujimoto>

Fig. 4 Dubai Smart. (2018, February 26). Retrieved December 07, 2020, from <https://www.safex.com/de/gallery/dubai-smart>

Fig. 5 Pensa al pavimento che desideri - Ideal Work: Pavimenti e superfici innovative. (2020, November 10). Retrieved December 07, 2020, from <https://www.idealwork.it/>

Fig. 6 6 - Møderum køkken - Henderson. (n.d.). Retrieved December 07, 2020, from <http://www.bbaf.dk/6-moderum-kkken->

Fig. 8 Behance. (n.d.). Baker McKenzie Wayfinding. Retrieved December 07, 2020, from <https://www.behance.net/gallery/72335299/Baker-McKenzie-Wayfinding>

Gray, T., & Birrell, C. (2014, November 26). Are biophilic-designed site office buildings linked to health benefits and high performing occupants? Retrieved March 27, 2020, from <https://www.ncbi.nlm.nih.gov/pmc/articles/PMC4276610/>

HUMAN SPACES: The Global Impact of Biophilic Design in the Workplace. (2015), 3–47. Retrieved Oct 31, 2020 from

https://greenplantsforgreenbuildings.org/wp-content/uploads/2015/08/Human-Spaces-Report-Biophilic-Global_Impact_Biophilic_Design.pdf

S. (2020, September 1). Together Again: The Future of Shared Spaces in the Office. Retrieved 2020, from https://buffalostate.open.suny.edu/bbcswebdav/pid-1845966-dt-content-rid-17115076_1/courses/202030-IDE401-4289/Collaborative-Social-Space-Design-After-COVID-19.pdf

THANK
YOU

